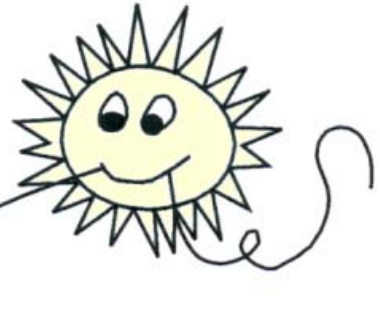


**Winter
2003**

**FLORIDA
ASSOCIATION
FOR
PLAY
THERAPY**



**FAPT Board
Members**

President:
Janet Courtney

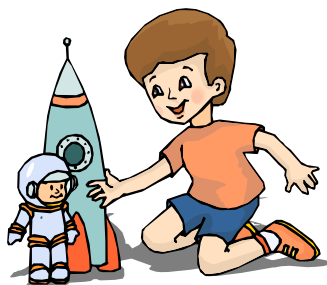
Vice-president
Larry Rubin

Secretary
Ellen Wood

Treasurer
Scott Ryan

Members-At-Large
Tracy Howard
Diana Malca

Immediate
Past President
Lisa Saldaña



The Playful Healer

The Newsletter of the Florida Association for Play Therapy, Inc.

**FAPT's Goal for 2003: Development
of Local Chapters**

FAPT is a Branch of the **Association for Play Therapy**. Last year, the FAPT Board approved a process by which FAPT members can form *local* Chapters. This step was taken as a way to give our members the means to provide local training, supervision, and consultation opportunities to each other, and to serve as a local play therapy network.

On December 12, the newly formed Conference Committee held their first meeting via telephone conference. The Committee discussed a number of topics, including the concept of helping our members to form local Chapters throughout the state. FAPT President Janet Courtney stated that FAPT's Conference Committee could help and support local Chapters in this process.

To create a local Chapter, members just need to identify the geographic area they wish to represent and serve, have 10 members willing to be actively involved in the Chapter, and have a Board consisting of a President, Vice-president, and Secretary-

Treasurer. There are no additional dues or fees required of the Chapter or its members. Once formed, Chapters may submit proposals for workshops to the conference committee. Whenever possible, FAPT would provide assistance and APT-approved play therapy continuing education credit for the workshops.

For information on forming a chapter, contact Janet Courtney at FAPTcentral@myacc.net or go to the FAPT website, where you can download the Chapter policies and agreement. (www.floridaplaytherapy.org)

Contents:

APT News..	2
Conference Survey	3
Announcements	5
Message from the President	7
FAPT Board Directory	7
Membership Application	8



Have a Great Idea or Experience to Share?

We welcome contributions to the newsletter. We are looking for letters to the editor, tips and techniques our members developed, resources they've found, research they've done, clinical/personal experiences they've had that led to professional growth. Articles on child development, family play therapy, supervision, and multicultural issues in play therapy are needed to create series on these topics.

We're not asking for a long term commitment, although it would be wonderful to have regular contributors. It doesn't need be a long, scholarly article, although we love to receive those, too. What have you found that works, or doesn't work, in the play room? What books have you read that we should read? We want to share the ideas and techniques our fellow Play Therapists have discovered and developed.

There's a lot of wisdom, knowledge, and experience out there. We hope you'll share some of it with us:

FAPT
Children's Psychiatric Center
9380 Sunset Drive
Suite B-235
Miami, Florida 33173



News from The Association for Play Therapy

2003 Membership Campaign

Will you help APT expand our membership to 4,900 individuals by recruiting at least one new APT member in 2003? You will earn two points for each Professional member and one point for each new Affiliate member recruited between January 1 and September 15. If you accumulate the most points by September 15, you will receive FREE 2003 Conference and Preconference registration and lodging in Toronto, Canada **(A \$1,500 value!)**.

Whether you print the membership application from our website (www.a4pt.org) or request membership brochures from APT, be sure to include your name as Sponsor on each application!

Which of your peers (i.e. psychologists, social workers, counselors, marriage and family therapists) will you invite to join APT in 2003?

New to the APT Website

The APT website has added a Parent's Page. This page provides answers to parent/caregiver questions, such as "What is play therapy?" "What is a play therapist?" "Does my child need play therapy?" "How do I prepare my child for play therapy?" There is also a section on "How do I choose a play therapist?" that has a link to the APT Membership Directory to assist parents and caregivers

in finding a play therapist in their area. We welcome any suggestions about how to make this new section more effective.

Distance Learning in Play Therapy

Interested in developing your play therapy skills and knowledge, but can't go to workshops or conferences? APT's website now has links to 31 hours of approved on-line continuing education from different providers.

Congratulations to FAPT

for another great year of promoting play therapy and serving your members. Your branch has contributed several ideas to our national conversations and elected one of its own to our board of directors. This reflects well upon each of you, as FAPT continues to set the pace. Thanks for your concern for others, passion for play therapy, and unwavering membership support and participation. Our first 20 years has been memorable -- but you ain't seen nuthin' yet! On behalf of the Board of Directors and Staff, we look forward to working even more closely with you in 2003!"

Bill Burns, CAE
Executive Director

The Playful Healer

Editor

Lisa Saldaña
Contributors:
Janet Courtney,
Soni McCarty,
Larry Rubin

Florida Conference -To Be or Not to Be- That is Our Question to You

Calling all playful healers -- listen up -- your help is needed! The Florida Association for Play Therapy is considering an annual play therapy conference in Florida, and the University of Central Florida is being considered as a venue site and conference co-sponsor. We need your input to ensure that we make the most of such an incredible opportunity. Please spend a few moments responding to the survey below. If you need more room, feel free to add comments or other information on the back. You can mail your responses to Karen Myers by removing this page, folding it, and adding a stamp. You can fax it to her at: 954-446-6947. You can also complete the survey online at our website: Go to www.floridaplaytherapy.org and click on the "Membership Survey" button. It takes just a minute!

Would you prefer:

- A 1-day conference
- A 2-day conference
- More than 2-days?

Would you prefer:

- A full-day format
- A half-day format

Would you prefer:

- A weekday conference
- A weekend
- A combination such as Friday/Saturday

What topics are you most interested in?

Would you prefer:

- One or two nationally known presenters
- A choice of multiple speakers, including "local" presenters

If we could draw a nationally known speaker, whom would most interest you?

Do **you** have an interest in presenting? If so, please write a brief summary of your topic.

What are the most important aspects of a conference to *you*?

How interested are you in receiving CE credits for your Florida license?

- Very
- Not very
- I'm not licensed

How interested are you in receiving Play Therapy CE credits toward becoming an RPT or RPT-S?

- Very
- Not very
- I'm already an RPT or RPT-S

If the conference is held in Orlando, how interested are you in sightseeing while you are in the area?

- Very
- Not very

February is a month that the conference committee has discussed, because it is far enough away from the APT conference, plus a slower travel month. (i.e. we could get cheaper accommodations and perhaps some other perks/discounts) Would February be a month you'd consider for a conference?

- Yes
- No
- Doesn't really matter

Are there any other conferences in February that you are aware of that might conflict?

- No
- Yes

If yes, please tell us:

Additional Comment and/or Suggestions:

Take Time for Children !!!

You don't need to do a lot to accomplish a lot . . .

Become a Guardian Ad Litem

Volunteer at a children's hospital

Write your government officials about children's
issues you feel strongly about

Tutor at a school near you

Tell a child how terrific they are

Advocate for early intervention and children's
mental health programs

Mentor a child

Hug your child

Talk to people in your community about
children's needs

To mail, fold here and add tape and a stamp!

From:

Karen Myers, LCSW
Conference Committee Chair
2552 Jardin Way
Westin, Florida 33327

ANNOUNCEMENTS

Congratulations!

APT Newsletter Editor, **Sandi Frick-Helms**, has notified us that we have three Florida Branch members with articles in the APT Newsletter:

Montse Casado, Ph.D. and **Jennifer Giblin** had an article in the December 2002 Newsletter. Montse is the Play Therapy Certificate Coordinator at the University of Central Florida, Department of Child, Family, and Community Sciences. Jennifer is a Masters Intern at Kid's House, the University of Central Florida, Department of Child, Family, and Community Sciences.

You'll find two more articles from Florida members in the the March, 2003 Newsletter. The first author is **Penny L. Phares , ARNP, RPT**. Penny is a Child Psychiatric Nurse Practitioner and Registered Play Therapist.

The other article is by **Jeffrey Pickens, Ph.D.** co-writing with Anne Stewart, Ph.D., Jeffrey is Associate Professor, Dept. of Social Sciences and Counseling, St. Thomas University.

Jessica Leon, who told us about getting her RPT last year, has now added LCSW to her title.

Keeping In Touch

Coming soon: Larry Rubin, in association with St. Thomas University, is developing an FAPT Listserve to link state members through an ongoing discussion board. This will be a valuable way for members to communicate with each other for the purpose of discussing clinical, ethical and topical issues relevant to play therapy. Please contact Larry at lrubin@stu.edu if you're interested. There is no charge for this service. You will not be solicited, and participation is strictly voluntary.

Continued on page 6. . .

St. Thomas University's Department of Social Sciences and Counseling will be offering a beginning-intermediate graduate level course entitled

Play Therapy in Counseling

on four consecutive weekends, beginning in May 2003. Dr. Donna Faranda, experienced clinician and educator of Family Central, will be the instructor.

Students may use the class to accrue 45 credit hours toward their APT 150 clock hour requirement. Major theories of play therapy will be discussed as will a broad range of techniques for applying play therapy to diverse populations. Experiential exercises will deepen the learning experience.

Classes will meet on Friday evenings from 6-9 PM (5/30, 6/6, 6/13, 6/20) and on Saturday from 9 am to 5 pm (5/31, 6/7, 6/14, 6/21).

Questions may be directed to Dr. Lawrence Rubin at 305. 628.6585.

Quality Wood Creations by Lee Creech

"Create from your heart..."

custom wood sandtrays
sandtray tables
figurine shelves

131 Borada Rd.
Sanford, FL. 32773
Phone: (407) 461-5772
Email: qwcbyLee@yahoo.com

Set up with delivery available in Florida

ANNOUNCEMENTS

Continued from page 5. . .

Coming This Spring! Family Central of Broward County, in association with FAPT and St. Thomas University will be hosting a series of workshops entitled "Play Therapy With the Disruptive and Aggressive Child". Continuing education credits for 491 licensees and therapists seeking APT certification will be available. Please contact **Inez Noto** at 954.724.3979 for further details.

FAPT and Barry University in Miami will be offering a four-part play therapy training series beginning this February. Please contact the Barry University School of Social Work for further information (800-756-6000).

New Chapter News: A new Chapter of FAPT is forming in Broward County. If you are interested in participating, please contact **Inez Noto** at 954.724.3979. There

are no dues: you're a Chapter member if you live in Broward and belong to FAPT. For more information on Chapters, see the article on the front page.

Advertise in the FAPT Newsletter

Business card sized ad: \$10.00

1/4 page: \$25.00 1/2 page: \$50.00

Full Page: \$75.00

Contact Lisa Saldaña (305-975-4690 or lisasaldana@aol.com) to advertise in the next newsletter.

FAPT reserves the right to reject or cancel advertising for any reason. We will not accept any ad that discriminates against any group or individual.

The publication of any advertisement in the Playful Healer is not an endorsement of the products or services advertised. FAPT is not responsible for any claims made in the advertisement

Your Current FAPT Board Members

President:

Janet Courtney, LCSW, RPT-S
600 Sandtree Drive Suite 203-C
Palm Beach Gardens, FL 33403
561-624-8819 ext. #3
e-mail: Jancourt40@aol.com

Vice President:

Larry Rubin, PhD, RPT-S
941 NE 19 Ave. #204
Ft. Lauderdale
Florida 33304
954-875-8505
e-mail: rubin@pstcomputers.com

Treasurer:

Scott Ryan, MSW, PhD, LCSW, RPT-S
School of Social Work
Florida State University
Tallahassee, FL 32306-2570
850-644-9747 (fax) 850-644-9750
e-mail: sryan@mailers.fsu.edu

Secretary:

Ellen B. Wood, LCSW
15490 NW 7 Ave.
Miami, Florida 33169
305-685-0381
email:
ellenwood@juno.com



Members at Large:

Tracy L. Howard, MS
Florida State University
Center for Marriage and Family Therapy
540 W. Jefferson St.
Tallahassee, FL 32306
850-644-1588
email: tlhoward@rose.net

and

Diana Malca, LCSW, RPT-S
Healing Through Play, Corp.
20225 NE 34th Ct. #1514
Aventura, FL 33180
305-945-2774
email: diana@etca.net

Immediate Past President:

Lisa Saldaña, LMHC, RPT-S
7765 SW 87 Avenue
Suite #104
Miami, Florida 33173
305-975-4690
e-mail: lisasaldana@aol.com

Message from the President

Happy New Year! FAPT is embarking on some new and exciting additions for the New Year. A small conference committee chaired by Karen Myers, RPT, LCSW, is now active in planning an annual conference tentatively for February 2004. A Needs Assessment questionnaire is in this newsletter and on the FAPT website for members to give their input on what they (YOU) want regarding training or workshop opportunities. Please take a few minutes to give your valuable input. Thanks to Soni McCarty for taking the time to create this Florida Conference Questionnaire.

Congratulations to our members in Broward County who are forming the first official FAPT Chapter. The interim President and Vice President are Ines Noto and Chantalle Herrera, respectively, and the co-Secretary/Treasurers are Julie Berg and Marla Berger. Thanks to our Broward members for leading the way, and I encourage other counties and geographic areas to organize and form chapters as well. (I have contact names and numbers of people from around the state that were part of the annual conference in St. Louis who expressed interest in forming Chapters. Please contact me if you are interested in obtaining some of these contact people for your area.)

One of the benefits of forming local Chapters is to increase localized training opportunities for members. Larry Rubin, Ph.D., RPT-S, our FAPT Vice President will be the contact person for arranging the local Chapter conference approvals and providing APT CE's as needed.

Your input and visions for FAPT are very important and are always welcome. It is an exciting and rewarding phenomenon to witness the changes that occur in the lives of the children we touch. I honor each of you for taking part in a therapy that honors children at their developmental level. Nancy Boyd-Webb writes, "Trying to engage a young child without the use of toys is like trying to communicate with a deaf person without the use of sign language." Looking forward to meeting you this year.

With Warmest Appreciation for your Service to Children,

Janet A. Courtney, LCSW
561-624-8819 ext. #3
Jancourt40@aol.com
FAPTcentral@myacc.net

APT MEMBERSHIP APPLICATION

The directory information provided below will, unless otherwise noted, appear in your annual Membership Directory listing. Please provide the information requested in each item.
I wish to promote and support the field of play therapy by becoming a Member of the Association for Play Therapy, Inc. and the Florida Association for Play Therapy, Inc. Branch!"

Category: Professional (Individual mental health professional)
 Affiliate (full-time student, parent, etc.)

First Name: _____ Last Name: _____

Degree/Designation _____ Sponsor Name: _____

Branch: **Florida** SSN _____ - _____ - _____ (Confidential. Used only for identification purposes)

Business/Affiliation: _____

Address: _____ City _____ State: **FL** Zip: _____

Telephone (____) _____ - _____ Fax (____) _____ - _____ Email: _____

Annual Dues: APT: \$ **55.00** + Florida Branch: \$**20.00** = \$**75.00** Total dues

Check/Money Order Credit Card: Visa MasterCard Acct. # _____

Expiration Date (mm/yy) _____ Signature: _____

Mail application with payment to: Association for Play Therapy; 2050 N. Winery Ave. #101,
Fresno, California 93703 Fax: 559-252-2297

FLORIDA
ASSOCIATION
FOR
PLAY
THERAPY



www.floridaplaytherapy.org

The Children's Psychiatric Center, Inc.
9380 Sunset Drive
Suite B-235
Miami, Florida 33173